

Part No.	Description	QTY	UOM
4072001	X-Tension Terminal Component K	1	EACH
4072002	X-Tension System Hardware Kit	1	EACH
4072004	X-Tension CT Guardrail Control	1	EACH
4072008	X-Tension Installation Manual	1	MANUFT

NOTES: UNLESS OTHERWISE SPECIFIED SYSTEM TO BE INSTALLED PER MANUFACTURER SPECIFICATIONS.

1. ONLY TIGHTEN THE CABLE ASSEMBLIES USING THE NUTS AT THE CABLE BRACKET (SEE DETAIL 'D'). DO NOT TIGHTEN THE CABLES AT THE FRONT OF THE GROUND ANCHOR.

2. WHEN DRIVING STEEL POST, ENSURE THAT A DRIVING CAP WITH TIMBER OR PLASTIC INSERT IS USED TO PREVENT DAMAGE TO THE GALVANIZING TO THE TOP OF THE POST.

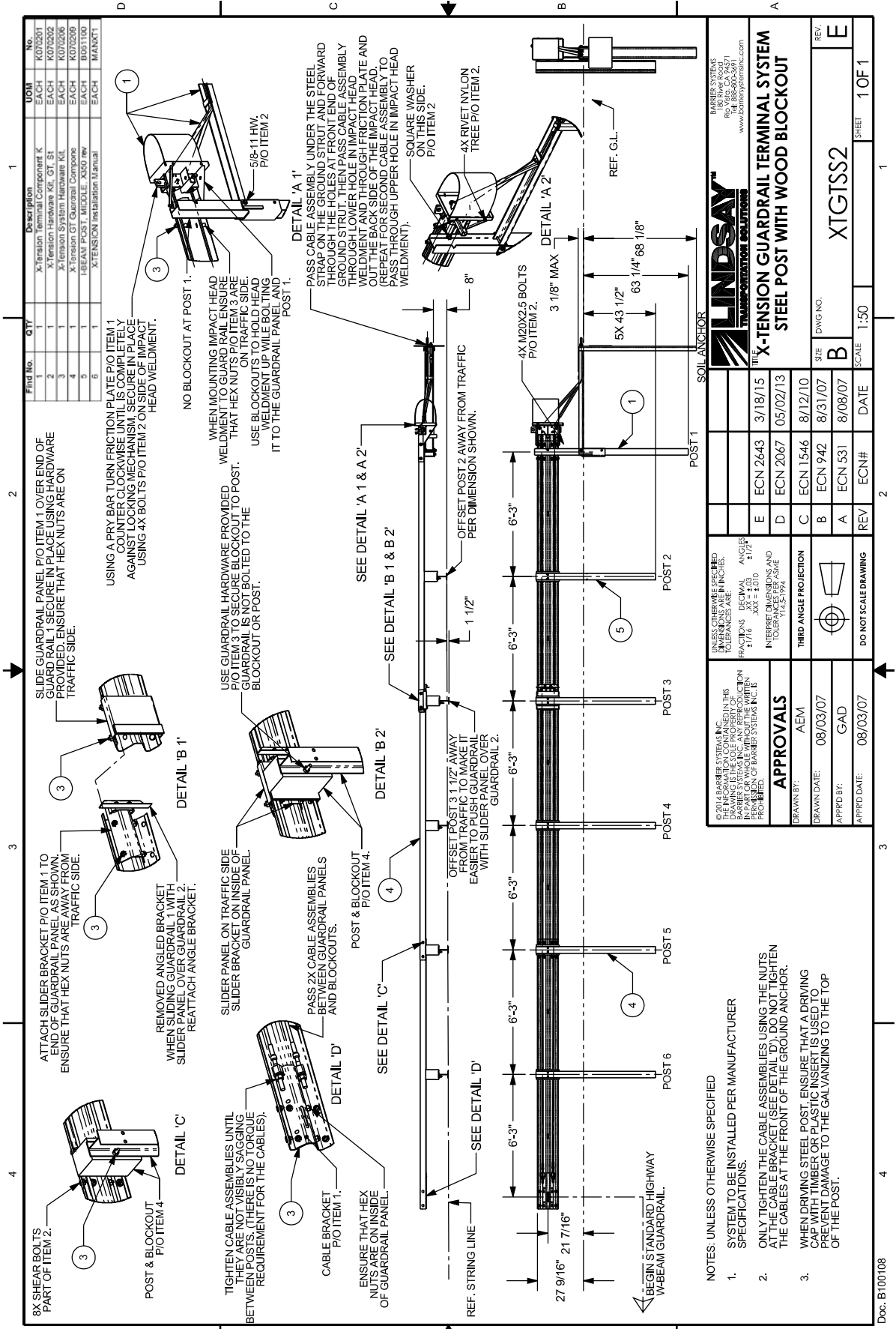
APPROVALS

DESIGNED BY: AEM
 DRAWN DATE: 08/03/07
 APP'D BY: GAD
 APP'D DATE: 08/03/07

DO NOT SCALE DRAWING

REV: A ECN 531 8/08/07
 B ECN 942 8/31/07
 C ECN 1546 8/11/10
 D ECN 2067 05/02/13
 E ECN 2643 3/18/15

DATE: 8/08/07
 SCALE: 1:50
 SHEET: 1 OF 1



LINDSAY
TRANSPORTATION SOLUTIONS

© 2014 BARBER SYSTEMS, INC. IN THIS DRAWING IS THE SOLE PROPERTY OF BARBER SYSTEMS, INC. ANY REPRODUCTION OR TRANSMISSION OF THIS DRAWING WITHOUT THE WRITTEN PERMISSION OF BARBER SYSTEMS, INC. IS PROHIBITED.

APPROVALS: AEM; DRAWN DATE: 08/03/07; GAD; APPROVED DATE: 08/03/07

DO NOT SCALE DRAWING

UNLESS OTHERWISE SPECIFIED DIMENSIONS ARE IN INCHES. TOLERANCES ARE: FRACTIONS: DECIMAL: ANGLES: 1/16 .XXX ±0.0 1/2

INTERFERE DIMENSIONS AND TOLERANCES PER ASME Y14.5-2009

THIRD ANGLE PROJECTION

REV: E; DATE: 10/01/11; SHEET: 1 OF 1

